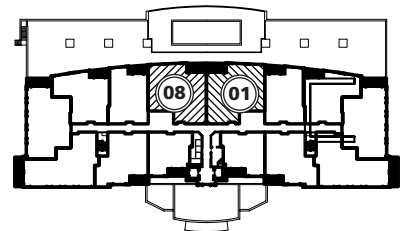
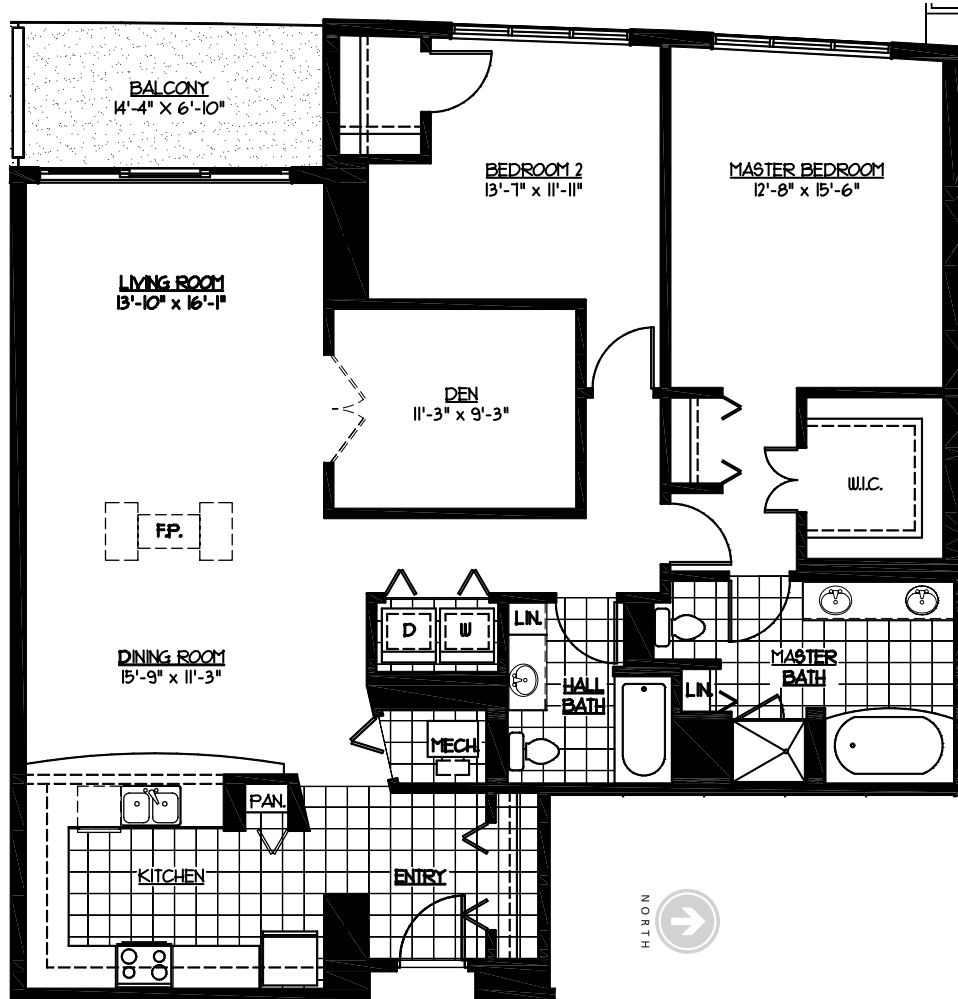


# Floorplan : Unit 01 : 08

2 Bedrooms with Den | 2 Bathrooms | 1,759 SF



Unit 01 is shown. Unit 08 is inverted.

## Luxury Building Features

Golf course views, per plan  
Professionally landscaped exterior  
Secured indoor parking included  
External parking available  
Elegant lobby staffed by 24-hour doorman  
Two high speed elevators  
Lap pool facing golf course on roof terrace  
His & hers changing rooms near pool  
Events room adjacent to roof terrace  
Bike storage room  
Resident storage lockers available

## Energy-Efficiency Features

Individually controlled thermostats  
State-of-the-art safety system including:

- Smoke detectors
- Carbon monoxide detectors
- Fire alarm system with central monitoring system

Copper water supply piping and cast iron waste piping throughout  
(2) Pre-wired cable and TV outlets  
Home network ready

## Your Residence

9' ceilings in living and dining areas, per plan  
Private balconies or terraces, per plan  
12" x 12" ceramic tile in entry  
Wall-to-wall carpet in bedrooms, living room, dining room, den and hallway, per plan  
Solid core wood entry door  
Classic white six panel colonist doors with brass hardware  
Decorator lighting package  
GE Spacemaker™ Washer and Dryer  
Vinyl-clad wire shelving in closets

## Kitchens

12" x 12" ceramic tile flooring  
Designer oak, maple or white cabinetry  
3/4" granite countertops with 4" backsplash  
Double bowl stainless steel sink  
GE stainless steel appliances featuring:

- 17.9 cu. ft top-mount refrigerator
- Range
- Multi-cycle dishwasher
- GE Spacemaker™ Microwave
- 1/2 hp food disposal

## Bathrooms

Designer oak, maple or white cabinetry  
Ceramic tile floor and bathtub/shower surround  
Cultured marble vanity top with double bowl sinks, in master bath  
Cultured marble vanity top with single sink in guest bath  
Pedestal sink in powder room, per plan  
Moen™ Monticello Faucets  
Recessed lighting, per plan  
Exhaust fan  
Lighted dressing mirror above vanity

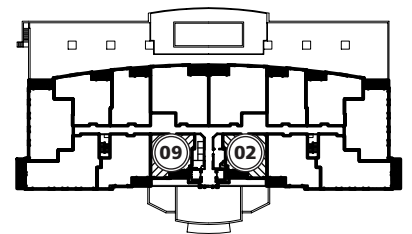
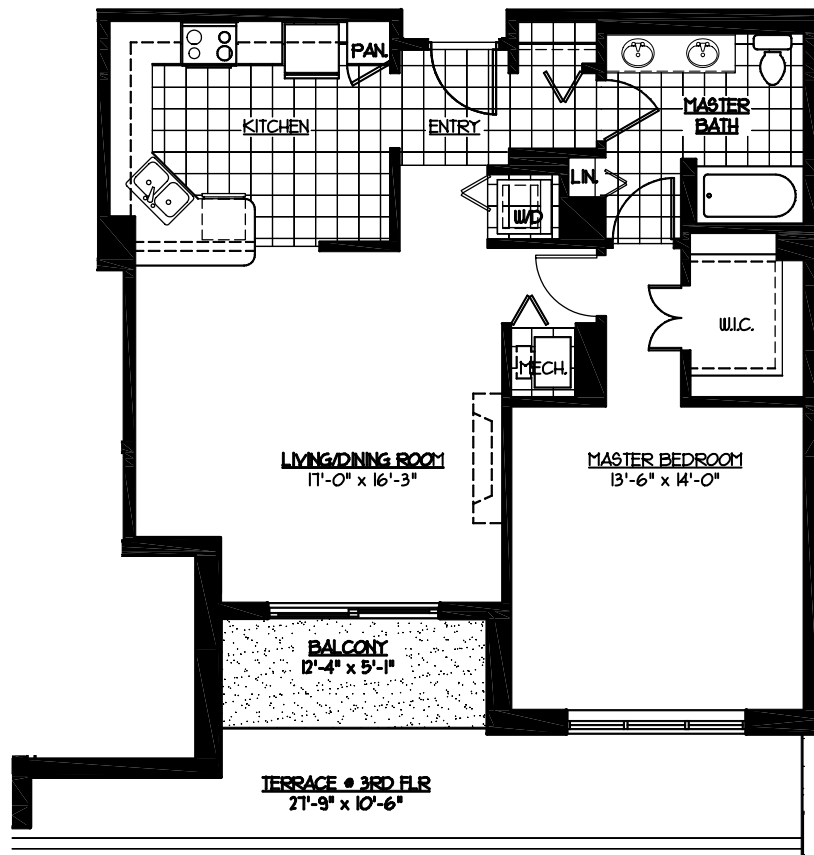
## Your Neighborhood Amenities

Main Street at Seven Bridges Shopping and Dining Area  
Seven Bridges Golf Club, Pro Shop and Grill  
Cinemark™ Seven Bridges  
Seven Bridges Ice Arena  
Edward Health & Fitness Center  
The Signature Room Banquet Facility

# Inclusions

# Floorplan : Unit 02 : 09

1 Bedroom | 1 Bathroom | 1,018 SF



Unit 02 is shown. Unit 09 is inverted.

## Luxury Building Features

Golf course views, per plan  
Professionally landscaped exterior  
Secured indoor parking included  
External parking available  
Elegant lobby staffed by 24-hour doorman  
Two high speed elevators  
Lap pool facing golf course on roof terrace  
His & hers changing rooms near pool  
Events room adjacent to roof terrace  
Bike storage room  
Resident storage lockers available

## Energy-Efficiency Features

Individually controlled thermostats  
State-of-the-art safety system including:

- Smoke detectors
- Carbon monoxide detectors
- Fire alarm system with central monitoring system

Copper water supply piping and cast iron waste piping throughout  
(2) Pre-wired cable and TV outlets  
Home network ready

## Your Residence

9' ceilings in living and dining areas, per plan  
Private balconies or terraces, per plan  
12" x 12" ceramic tile in entry  
Wall-to-wall carpet in bedrooms, living room, dining room, den and hallway, per plan  
Solid core wood entry door  
Classic white six panel colonist doors with brass hardware  
Decorator lighting package  
GE Spacemaker™ Washer and Dryer  
Vinyl-clad wire shelving in closets

## Kitchens

12" x 12" ceramic tile flooring  
Designer oak, maple or white cabinetry  
3/4" granite countertops with 4" backsplash  
Double bowl stainless steel sink  
GE stainless steel appliances featuring:

- 17.9 cu. ft top-mount refrigerator
- Range
- Multi-cycle dishwasher
- GE Spacemaker™ Microwave
- 1/2 hp food disposal

## Bathrooms

Designer oak, maple or white cabinetry  
Ceramic tile floor and bathtub/shower surround  
Cultured marble vanity top with double bowl sinks, in master bath  
Cultured marble vanity top with single sink in guest bath  
Pedestal sink in powder room, per plan  
Moen™ Monticello Faucets  
Recessed lighting, per plan  
Exhaust fan  
Lighted dressing mirror above vanity

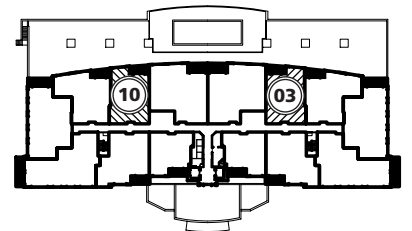
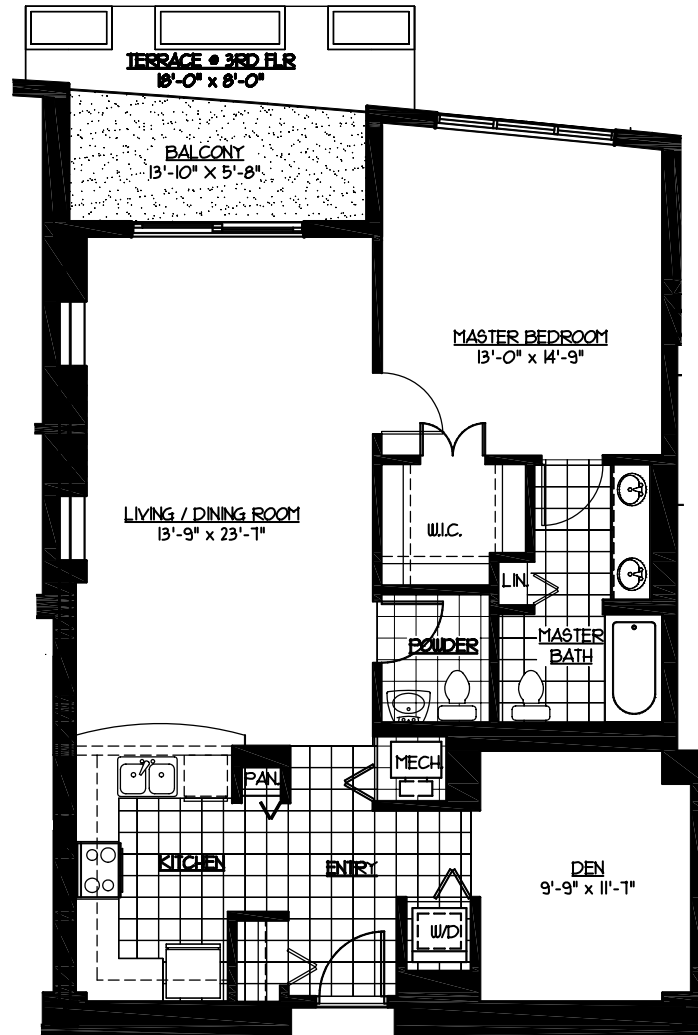
## Your Neighborhood Amenities

Main Street at Seven Bridges Shopping and Dining Area  
Seven Bridges Golf Club, Pro Shop and Grill  
Cinemark™ Seven Bridges  
Seven Bridges Ice Arena  
Edward Health & Fitness Center  
The Signature Room Banquet Facility

# Inclusions

# Floorplan : Unit 03 : 10

1 Bedroom with Den | 1.5 Bathrooms | 1,217 SF



Unit 03 is shown. Unit 10 is inverted.

## Luxury Building Features

Golf course views, per plan  
Professionally landscaped exterior  
Secured indoor parking included  
External parking available  
Elegant lobby staffed by 24-hour doorman  
Two high speed elevators  
Lap pool facing golf course on roof terrace  
His & hers changing rooms near pool  
Events room adjacent to roof terrace  
Bike storage room  
Resident storage lockers available

## Energy-Efficiency Features

Individually controlled thermostats  
State-of-the-art safety system including:

- Smoke detectors
- Carbon monoxide detectors
- Fire alarm system with central monitoring system

Copper water supply piping and cast iron waste piping throughout  
(2) Pre-wired cable and TV outlets  
Home network ready

## Your Residence

9' ceilings in living and dining areas, per plan  
Private balconies or terraces, per plan  
12" x 12" ceramic tile in entry  
Wall-to-wall carpet in bedrooms, living room, dining room, den and hallway, per plan  
Solid core wood entry door  
Classic white six panel colonist doors with brass hardware  
Decorator lighting package  
GE Spacemaker™ Washer and Dryer  
Vinyl-clad wire shelving in closets

## Kitchens

12" x 12" ceramic tile flooring  
Designer oak, maple or white cabinetry  
3/4" granite countertops with 4" backsplash  
Double bowl stainless steel sink  
GE stainless steel appliances featuring:

- 17.9 cu. ft top-mount refrigerator
- Range
- Multi-cycle dishwasher
- GE Spacemaker™ Microwave
- 1/2 hp food disposal

## Bathrooms

Designer oak, maple or white cabinetry  
Ceramic tile floor and bathtub/shower surround  
Cultured marble vanity top with double bowl sinks, in master bath  
Cultured marble vanity top with single sink in guest bath  
Pedestal sink in powder room, per plan  
Moen™ Monticello Faucets  
Recessed lighting, per plan  
Exhaust fan  
Lighted dressing mirror above vanity

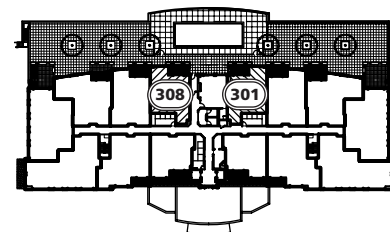
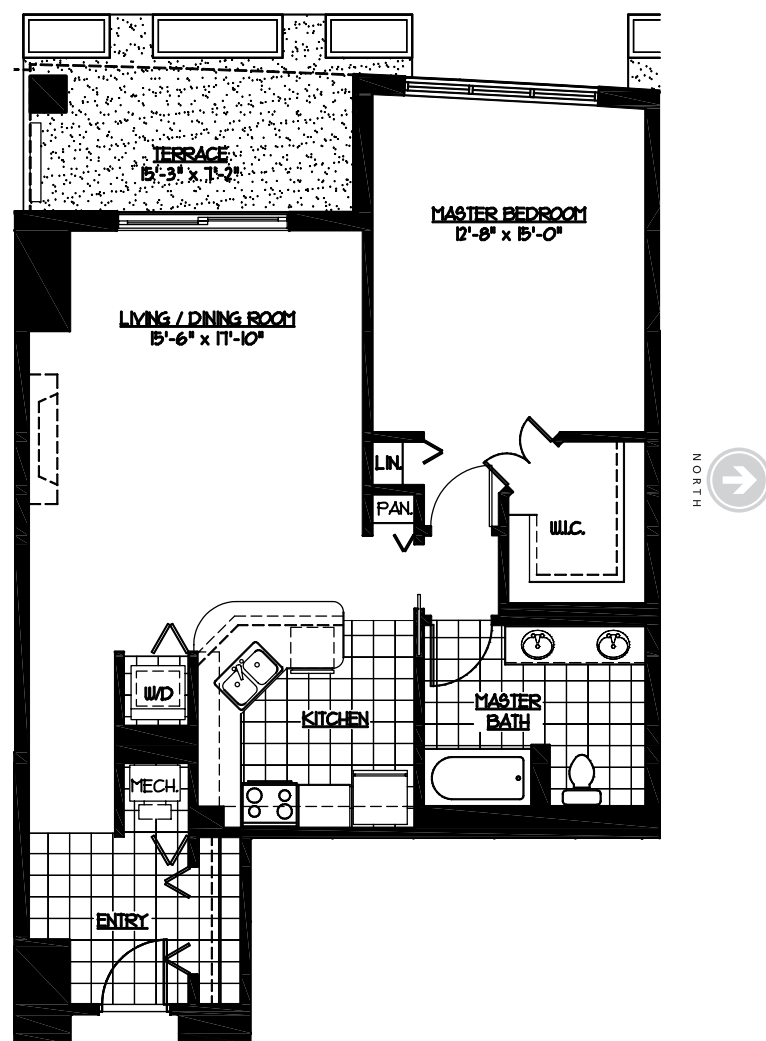
## Your Neighborhood Amenities

Main Street at Seven Bridges Shopping and Dining Area  
Seven Bridges Golf Club, Pro Shop and Grill  
Cinemark™ Seven Bridges  
Seven Bridges Ice Arena  
Edward Health & Fitness Center  
The Signature Room Banquet Facility

# Inclusions

# Floorplan : Unit 301 : 308

1 Bedroom | 1 Bathroom | 1,015 SF



Unit 301 is shown. Unit 308 is inverted.

## Luxury Building Features

Golf course views, per plan  
Professionally landscaped exterior  
Secured indoor parking included  
External parking available  
Elegant lobby staffed by 24-hour doorman  
Two high speed elevators  
Lap pool facing golf course on roof terrace  
His & hers changing rooms near pool  
Events room adjacent to roof terrace  
On site dry cleaning drop-off  
Resident storage lockers available

## Energy-Efficiency Features

Individually controlled thermostats  
State-of-the-art safety system including:

- Smoke detectors
- Carbon monoxide detectors
- Fire alarm system with central monitoring system

Copper water supply piping and cast iron waste piping throughout  
(2) Pre-wired cable and TV outlets  
Home network ready

## Your Residence

9' ceilings in living and dining areas, per plan  
Private balconies or terraces, per plan  
12" x 12" ceramic tile in entry  
Wall-to-wall carpet in bedrooms, living room, dining room, den and hallway, per plan  
Solid core wood entry door  
Classic white six panel colonist doors with brass hardware  
Decorator lighting package  
GE Spacemaker™ Washer and Dryer  
Vinyl-clad wire shelving in closets

## Kitchens

12" x 12" ceramic tile flooring  
Designer oak, maple or white cabinetry  
3/4" granite countertops with 4" backsplash  
Double bowl stainless steel sink  
GE stainless steel appliances featuring:

- 17.9 cu. ft top-mount refrigerator
- Range
- Multi-cycle dishwasher
- GE Spacemaker™ Microwave
- 1/2 hp food disposal

## Bathrooms

Designer oak, maple or white cabinetry  
Ceramic tile floor and bathtub/shower surround  
Cultured marble vanity top with double bowl sinks, in master bath  
Cultured marble vanity top with single sink in guest bath  
Pedestal sink in powder room, per plan  
Moen™ Monticello Faucets  
Recessed lighting, per plan  
Exhaust fan  
Lighted dressing mirror above vanity

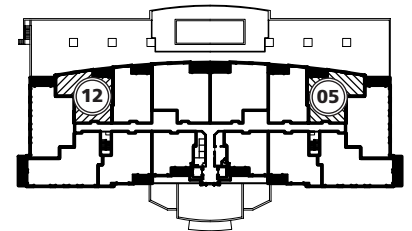
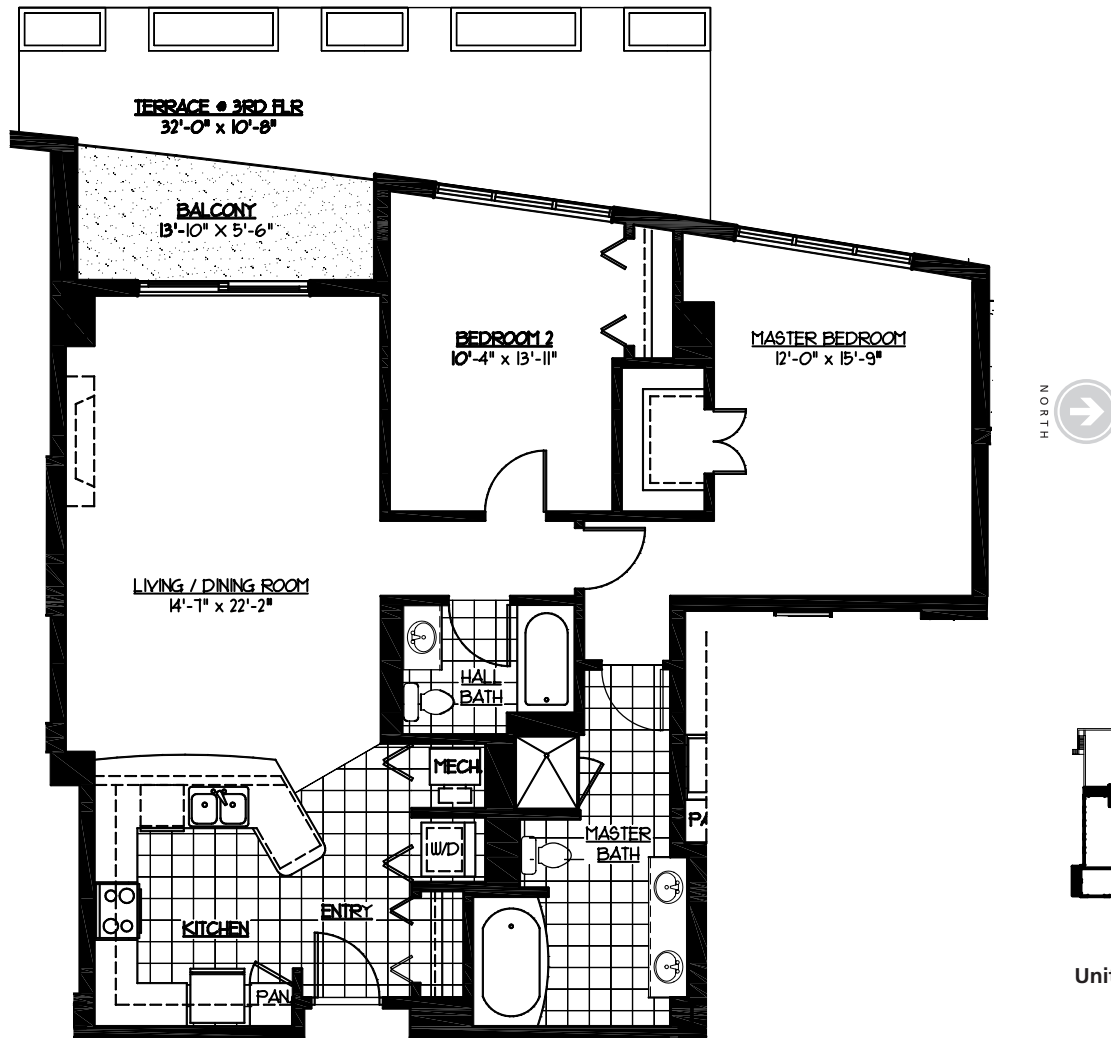
## Your Neighborhood Amenities

Main Street at Seven Bridges Shopping and Dining Area  
Seven Bridges Golf Club, Pro Shop and Grill  
Cinemark™ Seven Bridges  
Seven Bridges Ice Arena  
Edward Health & Fitness Center  
The Signature Room Banquet Facility

## Inclusions

# Floorplan : Unit 05 : 12

2 Bedrooms | 2 Bathrooms | 1,349 SF



Unit 05 is shown. Unit 12 is inverted.

## Luxury Building Features

Golf course views, per plan  
Professionally landscaped exterior  
Secured indoor parking included  
External parking available  
Elegant lobby staffed by 24-hour doorman  
Two high speed elevators  
Lap pool facing golf course on roof terrace  
His & hers changing rooms near pool  
Events room adjacent to roof terrace  
Bike storage room  
Resident storage lockers available

## Energy-Efficiency Features

Individually controlled thermostats  
State-of-the-art safety system including:

- Smoke detectors
- Carbon monoxide detectors
- Fire alarm system with central monitoring system

Copper water supply piping and cast iron waste piping throughout  
(2) Pre-wired cable and TV outlets  
Home network ready

## Your Residence

9' ceilings in living and dining areas, per plan  
Private balconies or terraces, per plan  
12" x 12" ceramic tile in entry  
Wall-to-wall carpet in bedrooms, living room, dining room, den and hallway, per plan  
Solid core wood entry door  
Classic white six panel colonist doors with brass hardware  
Decorator lighting package  
GE Spacemaker™ Washer and Dryer  
Vinyl-clad wire shelving in closets

## Kitchens

12" x 12" ceramic tile flooring  
Designer oak, maple or white cabinetry  
3/4" granite countertops with 4" backsplash  
Double bowl stainless steel sink  
GE stainless steel appliances featuring:

- 17.9 cu. ft top-mount refrigerator
- Range
- Multi-cycle dishwasher
- GE Spacemaker™ Microwave
- 1/2 hp food disposal

## Bathrooms

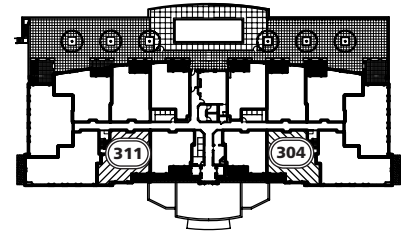
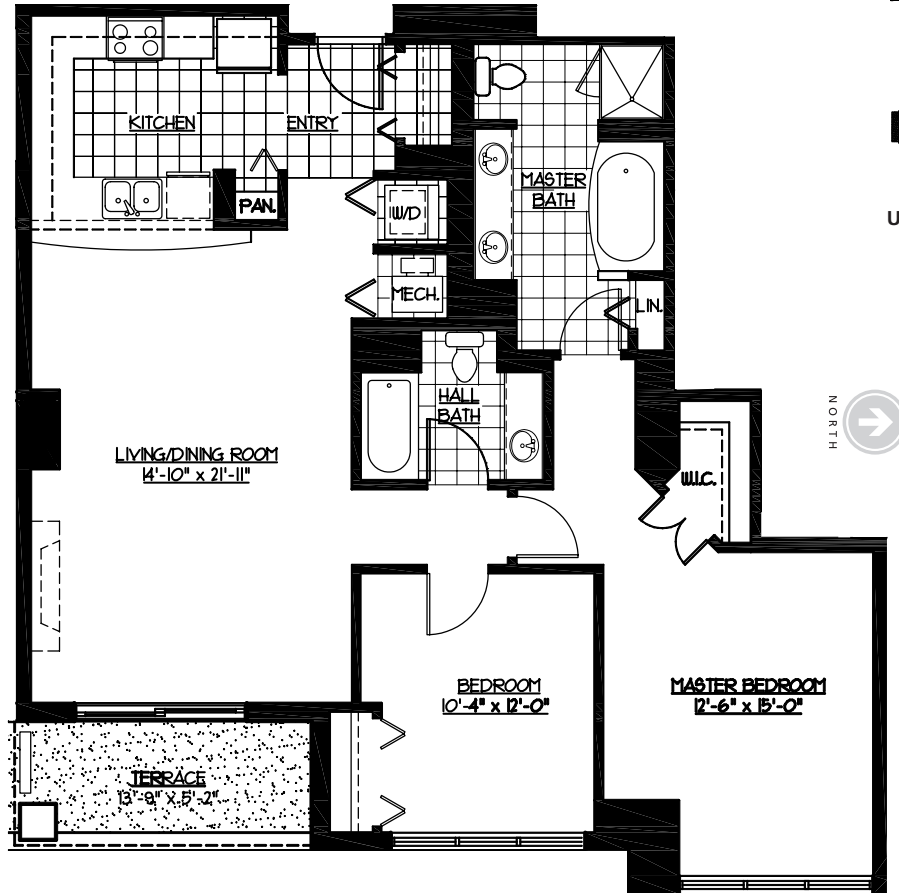
Designer oak, maple or white cabinetry  
Ceramic tile floor and bathtub/shower surround  
Cultured marble vanity top with double bowl sinks, in master bath  
Cultured marble vanity top with single sink in guest bath  
Pedestal sink in powder room, per plan  
Moen™ Monticello Faucets  
Recessed lighting, per plan  
Exhaust fan  
Lighted dressing mirror above vanity

## Your Neighborhood Amenities

Main Street at Seven Bridges Shopping and Dining Area  
Seven Bridges Golf Club, Pro Shop and Grill  
Cinemark™ Seven Bridges  
Seven Bridges Ice Arena  
Edward Health & Fitness Center  
The Signature Room Banquet Facility

# Floorplan : Unit 304 : 311

2 Bedrooms | 2 Bathrooms | 1,266 SF



Unit 304 is shown. Unit 311 is inverted.



## Luxury Building Features

Golf course views, per plan  
Professionally landscaped exterior  
Secured indoor parking included  
External parking available  
Elegant lobby staffed by 24-hour doorman  
Two high speed elevators  
Lap pool facing golf course on roof terrace  
His & hers changing rooms near pool  
Events room adjacent to roof terrace  
On site dry cleaning drop-off  
Resident storage lockers available

## Energy-Efficiency Features

Individually controlled thermostats  
State-of-the-art safety system including:

- Smoke detectors
- Carbon monoxide detectors
- Fire alarm system with central monitoring system

Copper water supply piping and cast iron waste piping throughout  
(2) Pre-wired cable and TV outlets  
Home network ready

## Your Residence

9' ceilings in living and dining areas, per plan  
Private balconies or terraces, per plan  
12" x 12" ceramic tile in entry  
Wall-to-wall carpet in bedrooms, living room, dining room, den and hallway, per plan  
Solid core wood entry door  
Classic white six panel colonist doors with brass hardware  
Decorator lighting package  
GE Spacemaker™ Washer and Dryer  
Vinyl-clad wire shelving in closets

## Kitchens

12" x 12" ceramic tile flooring  
Designer oak, maple or white cabinetry  
3/4" granite countertops with 4" backsplash  
Double bowl stainless steel sink  
GE stainless steel appliances featuring:

- 17.9 cu. ft top-mount refrigerator
- Range
- Multi-cycle dishwasher
- GE Spacemaker™ Microwave
- 1/2 hp food disposal

## Bathrooms

Designer oak, maple or white cabinetry  
Ceramic tile floor and bathtub/shower surround  
Cultured marble vanity top with double bowl sinks, in master bath  
Cultured marble vanity top with single sink in guest bath  
Pedestal sink in powder room, per plan  
Moen™ Monticello Faucets  
Recessed lighting, per plan  
Exhaust fan  
Lighted dressing mirror above vanity

## Your Neighborhood Amenities

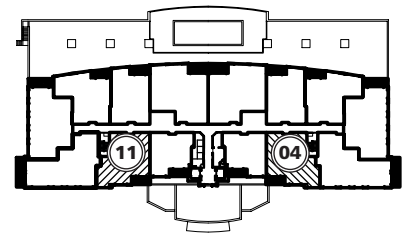
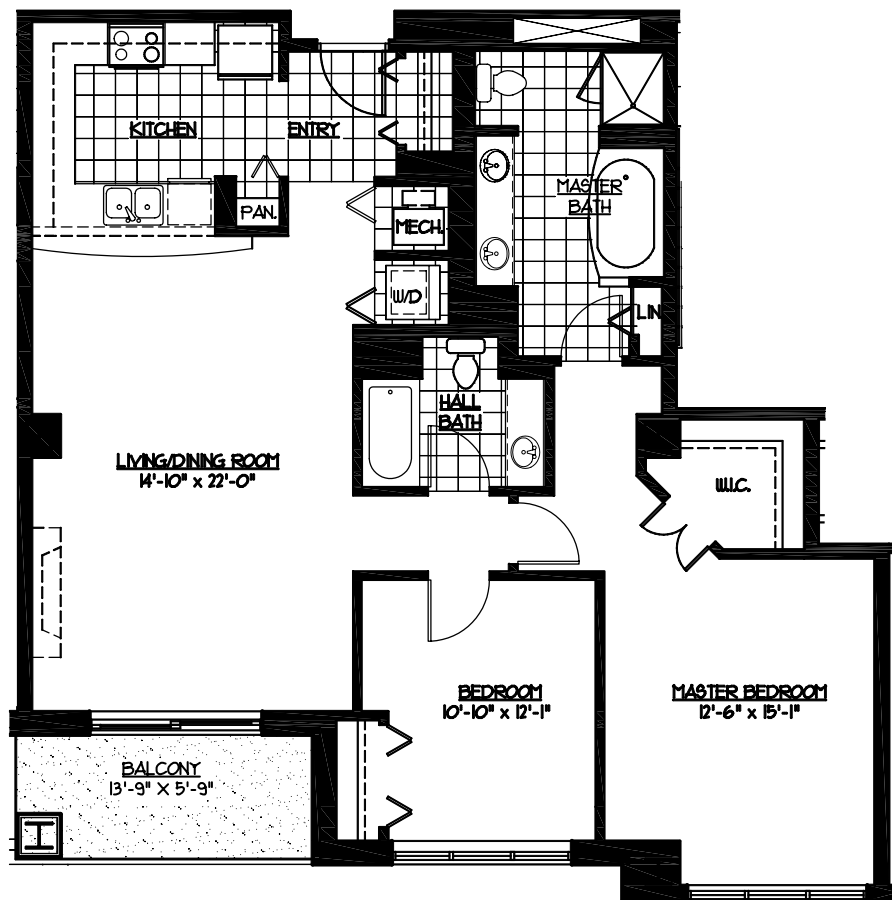
Main Street at Seven Bridges Shopping and Dining Area  
Seven Bridges Golf Club, Pro Shop and Grill  
Cinemark™ Seven Bridges  
Seven Bridges Ice Arena  
Edward Health & Fitness Center  
The Signature Room Banquet Facility

# Inclusions



# Floorplan : Unit 04 : 11

2 Bedrooms | 2 Bathrooms | 1,352 SF



Unit 04 is shown. Unit 11 is inverted.

## Luxury Building Features

Golf course views, per plan  
Professionally landscaped exterior  
Secured indoor parking included  
External parking available  
Elegant lobby staffed by 24-hour doorman  
Two high speed elevators  
Lap pool facing golf course on roof terrace  
His & hers changing rooms near pool  
Events room adjacent to roof terrace  
Bike storage room  
Resident storage lockers available

## Energy-Efficiency Features

Individually controlled thermostats  
State-of-the-art safety system including:

- Smoke detectors
- Carbon monoxide detectors
- Fire alarm system with central monitoring system

Copper water supply piping and cast iron waste piping throughout  
(2) Pre-wired cable and TV outlets  
Home network ready

## Your Residence

9' ceilings in living and dining areas, per plan  
Private balconies or terraces, per plan  
12" x 12" ceramic tile in entry  
Wall-to-wall carpet in bedrooms, living room, dining room, den and hallway, per plan  
Solid core wood entry door  
Classic white six panel colonist doors with brass hardware  
Decorator lighting package  
GE Spacemaker™ Washer and Dryer  
Vinyl-clad wire shelving in closets

## Kitchens

12" x 12" ceramic tile flooring  
Designer oak, maple or white cabinetry  
3/4" granite countertops with 4" backsplash  
Double bowl stainless steel sink  
GE stainless steel appliances featuring:

- 17.9 cu. ft top-mount refrigerator
- Range
- Multi-cycle dishwasher
- GE Spacemaker™ Microwave
- 1/2 hp food disposal

## Bathrooms

Designer oak, maple or white cabinetry  
Ceramic tile floor and bathtub/shower surround  
Cultured marble vanity top with double bowl sinks, in master bath  
Cultured marble vanity top with single sink in guest bath  
Pedestal sink in powder room, per plan  
Moen™ Monticello Faucets  
Recessed lighting, per plan  
Exhaust fan  
Lighted dressing mirror above vanity

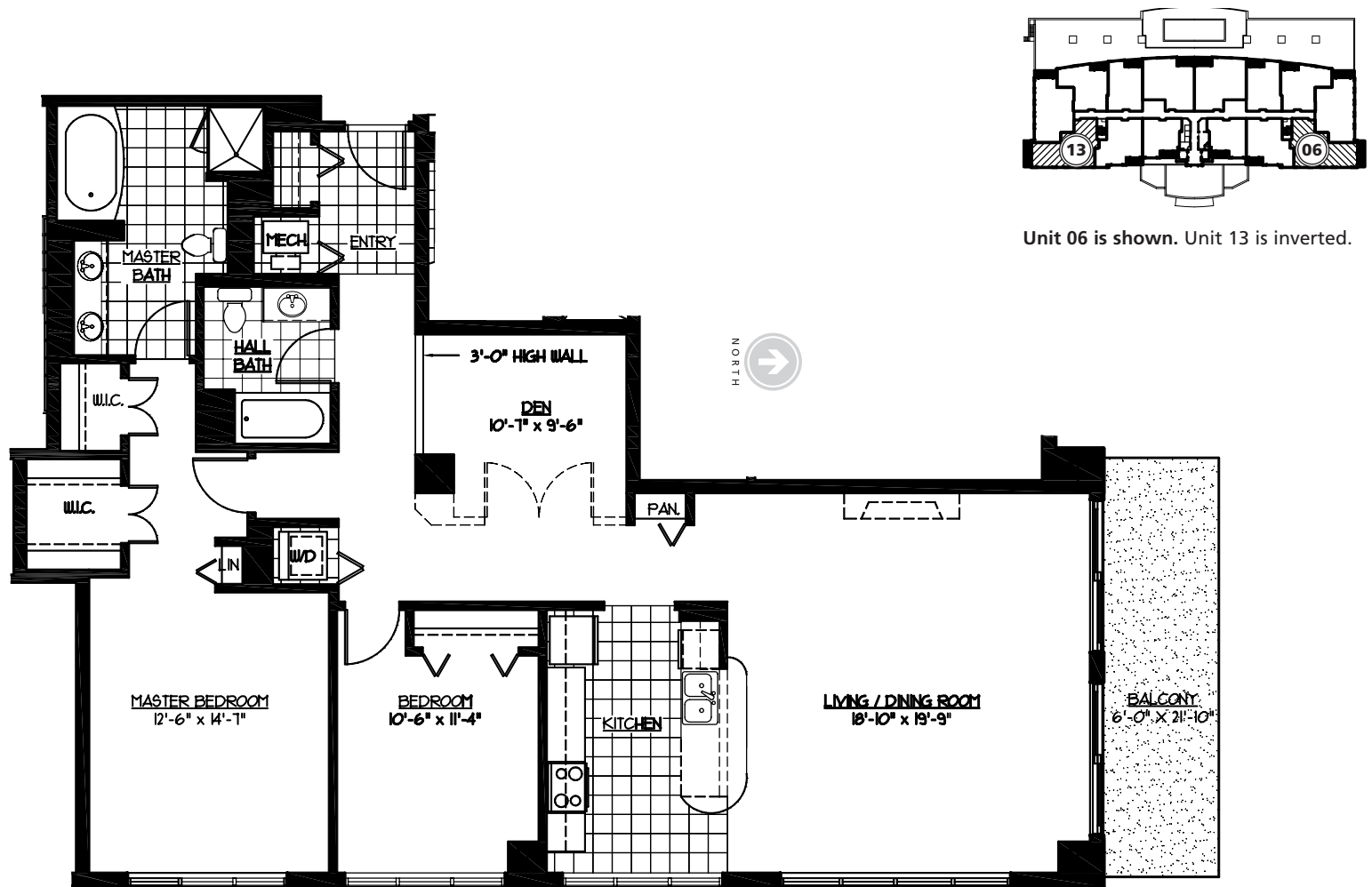
## Your Neighborhood Amenities

Main Street at Seven Bridges Shopping and Dining Area  
Seven Bridges Golf Club, Pro Shop and Grill  
Cinemark™ Seven Bridges  
Seven Bridges Ice Arena  
Edward Health & Fitness Center  
The Signature Room Banquet Facility

# Inclusions

# Floorplan : Unit 06 : 13

2 Bedrooms with Den | 2 Bathrooms | 1,730 SF



## Luxury Building Features

Golf course views, per plan  
Professionally landscaped exterior  
Secured indoor parking included  
External parking available  
Elegant lobby staffed by 24-hour doorman  
Two high speed elevators  
Lap pool facing golf course on roof terrace  
His & hers changing rooms near pool  
Events room adjacent to roof terrace  
Bike storage room  
Resident storage lockers available

## Energy-Efficiency Features

Individually controlled thermostats  
State-of-the-art safety system including:

- Smoke detectors
- Carbon monoxide detectors
- Fire alarm system with central monitoring system

Copper water supply piping and cast iron waste piping throughout  
(2) Pre-wired cable and TV outlets  
Home network ready

## Your Residence

9' ceilings in living and dining areas, per plan  
Private balconies or terraces, per plan  
12" x 12" ceramic tile in entry  
Wall-to-wall carpet in bedrooms, living room, dining room, den and hallway, per plan  
Solid core wood entry door  
Classic white six panel colonist doors with brass hardware  
Decorator lighting package  
GE Spacemaker™ Washer and Dryer  
Vinyl-clad wire shelving in closets

## Kitchens

12" x 12" ceramic tile flooring  
Designer oak, maple or white cabinetry  
3/4" granite countertops with 4" backsplash  
Double bowl stainless steel sink  
GE stainless steel appliances featuring:

- 17.9 cu. ft top-mount refrigerator
- Range
- Multi-cycle dishwasher
- GE Spacemaker™ Microwave
- 1/2 hp food disposal

## Bathrooms

Designer oak, maple or white cabinetry  
Ceramic tile floor and bathtub/shower surround  
Cultured marble vanity top with double bowl sinks, in master bath  
Cultured marble vanity top with single sink in guest bath  
Pedestal sink in powder room, per plan  
Moen™ Monticello Faucets  
Recessed lighting, per plan  
Exhaust fan  
Lighted dressing mirror above vanity

## Your Neighborhood Amenities

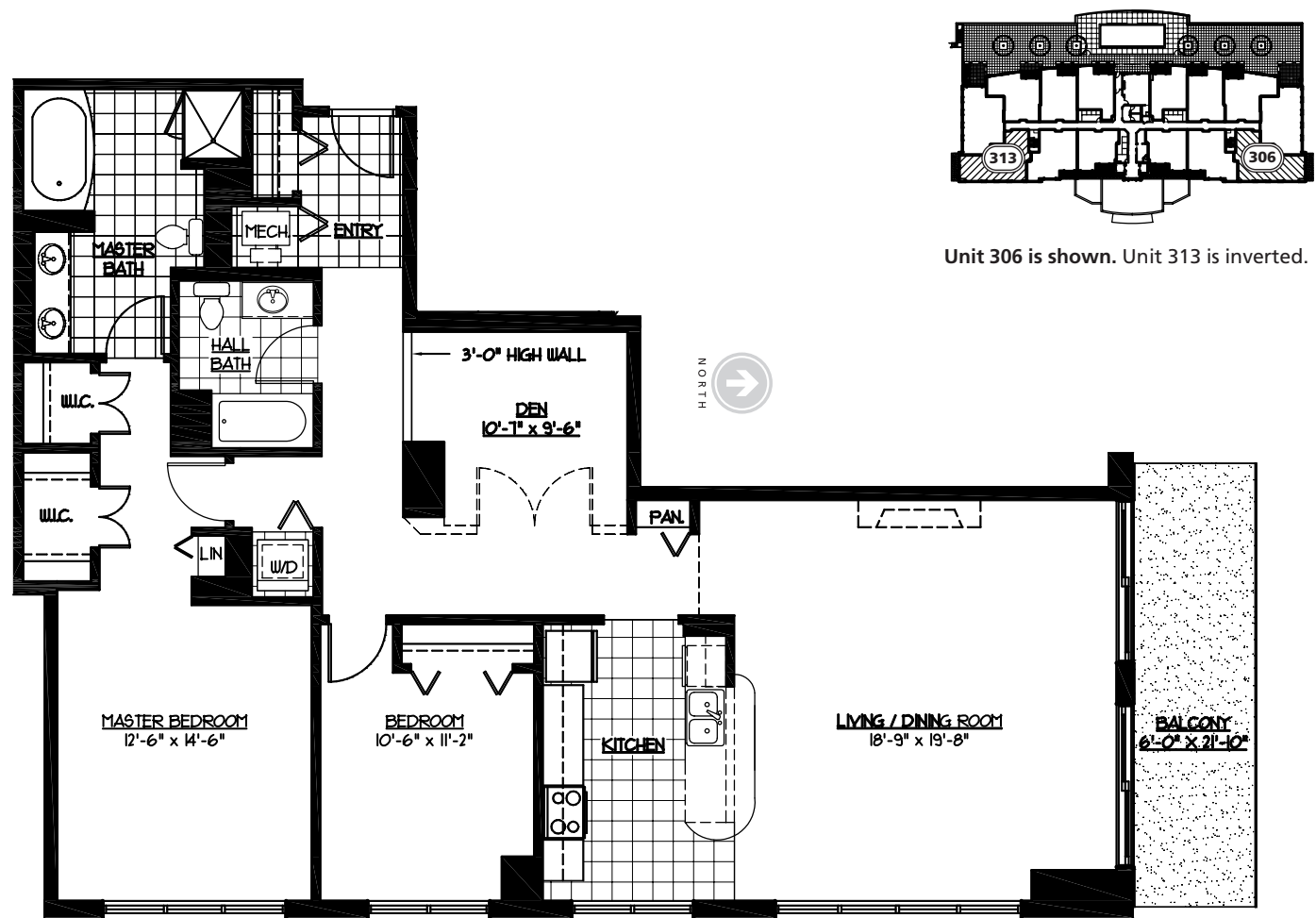
Main Street at Seven Bridges Shopping and Dining Area  
Seven Bridges Golf Club, Pro Shop and Grill  
Cinemark™ Seven Bridges  
Seven Bridges Ice Arena  
Edward Health & Fitness Center  
The Signature Room Banquet Facility

# Inclusions



# Floorplan : Unit 306 : 313

2 Bedrooms with Den | 2 Bathrooms | 1,718 SF



Unit 306 is shown. Unit 313 is inverted.

## Luxury Building Features

Golf course views, per plan  
Professionally landscaped exterior  
Secured indoor parking included  
External parking available  
Elegant lobby staffed by 24-hour doorman  
Two high speed elevators  
Lap pool facing golf course on roof terrace  
His & hers changing rooms near pool  
Events room adjacent to roof terrace  
On site dry cleaning drop-off  
Resident storage lockers available

## Energy-Efficiency Features

Individually controlled thermostats  
State-of-the-art safety system including:  
• Smoke detectors  
• Carbon monoxide detectors  
• Fire alarm system with central monitoring system  
Copper water supply piping and cast iron waste piping throughout  
(2) Pre-wired cable and TV outlets  
Home network ready

## Your Residence

9' ceilings in living and dining areas, per plan  
Private balconies or terraces, per plan  
12" x 12" ceramic tile in entry  
Wall-to-wall carpet in bedrooms, living room, dining room, den and hallway, per plan  
Solid core wood entry door  
Classic white six panel colonist doors with brass hardware  
Decorator lighting package  
GE Spacemaker™ Washer and Dryer  
Vinyl-clad wire shelving in closets

## Kitchens

12" x 12" ceramic tile flooring  
Designer oak, maple or white cabinetry  
3/4" granite countertops with 4" backsplash  
Double bowl stainless steel sink  
GE stainless steel appliances featuring:  
• 17.9 cu. ft top-mount refrigerator  
• Range  
• Multi-cycle dishwasher  
• GE Spacemaker™ Microwave  
• 1/2 hp food disposal

## Bathrooms

Designer oak, maple or white cabinetry  
Ceramic tile floor and bathtub/shower surround  
Cultured marble vanity top with double bowl sinks, in master bath  
Cultured marble vanity top with single sink in guest bath  
Pedestal sink in powder room, per plan  
Moen™ Monticello Faucets  
Recessed lighting, per plan  
Exhaust fan  
Lighted dressing mirror above vanity

## Your Neighborhood Amenities

Main Street at Seven Bridges Shopping and Dining Area  
Seven Bridges Golf Club, Pro Shop and Grill  
Cinemark™ Seven Bridges  
Seven Bridges Ice Arena  
Edward Health & Fitness Center  
The Signature Room Banquet Facility

# Inclusions

# Floorplan : Unit 07 : 14

3 Bedrooms | 2 Bathrooms | 1,678 SF



## Luxury Building Features

Golf course views, per plan  
Professionally landscaped exterior  
Secured indoor parking included  
External parking available  
Elegant lobby staffed by 24-hour doorman  
Two high speed elevators  
Lap pool facing golf course on roof terrace  
His & hers changing rooms near pool  
Events room adjacent to roof terrace  
Bike storage room  
Resident storage lockers available

## Energy-Efficiency Features

Individually controlled thermostats  
State-of-the-art safety system including:

- Smoke detectors
- Carbon monoxide detectors
- Fire alarm system with central monitoring system

Copper water supply piping and cast iron waste piping throughout  
(2) Pre-wired cable and TV outlets  
Home network ready

## Your Residence

9' ceilings in living and dining areas, per plan  
Private balconies or terraces, per plan  
12" x 12" ceramic tile in entry  
Wall-to-wall carpet in bedrooms, living room, dining room, den and hallway, per plan  
Solid core wood entry door  
Classic white six panel colonist doors with brass hardware  
Decorator lighting package  
GE Spacemaker™ Washer and Dryer  
Vinyl-clad wire shelving in closets

## Kitchens

12" x 12" ceramic tile flooring  
Designer oak, maple or white cabinetry  
3/4" granite countertops with 4" backsplash  
Double bowl stainless steel sink  
GE stainless steel appliances featuring:

- 17.9 cu. ft top-mount refrigerator
- Range
- Multi-cycle dishwasher
- GE Spacemaker™ Microwave
- 1/2 hp food disposal

## Bathrooms

Designer oak, maple or white cabinetry  
Ceramic tile floor and bathtub/shower surround  
Cultured marble vanity top with double bowl sinks, in master bath  
Cultured marble vanity top with single sink in guest bath  
Pedestal sink in powder room, per plan  
Moen™ Monticello Faucets  
Recessed lighting, per plan  
Exhaust fan  
Lighted dressing mirror above vanity

## Your Neighborhood Amenities

Main Street at Seven Bridges Shopping and Dining Area  
Seven Bridges Golf Club, Pro Shop and Grill  
Cinemark™ Seven Bridges  
Seven Bridges Ice Arena  
Edward Health & Fitness Center  
The Signature Room Banquet Facility